

SOLD



## 27 Trinette Street, Shailer Park

Showcasing an inspired full renovation, this residence is a stunning expression of modern design and impeccable style on a superb, fully useable 872m2 allotment. Sleek and sophisticated & guaranteed to wow' you, the home unfolds over the one expansive level. A mosaic tiled entry leading to your front door creates an immediate impression of style. On entry, a Pinterest-worthy mud room with its bench seat, built-in nooks with woven baskets and hanging hooks, ensures a tidy, clutter free home from the minute you step in the door.

A separate lounge room ensures that much needed separation that families desire. This roo...

4  2 

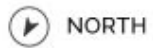
**Price:** \$625,000

**View:** <https://markcoleman.com.au/5358756>

**Mark Coleman Team**

**M 0434169033**

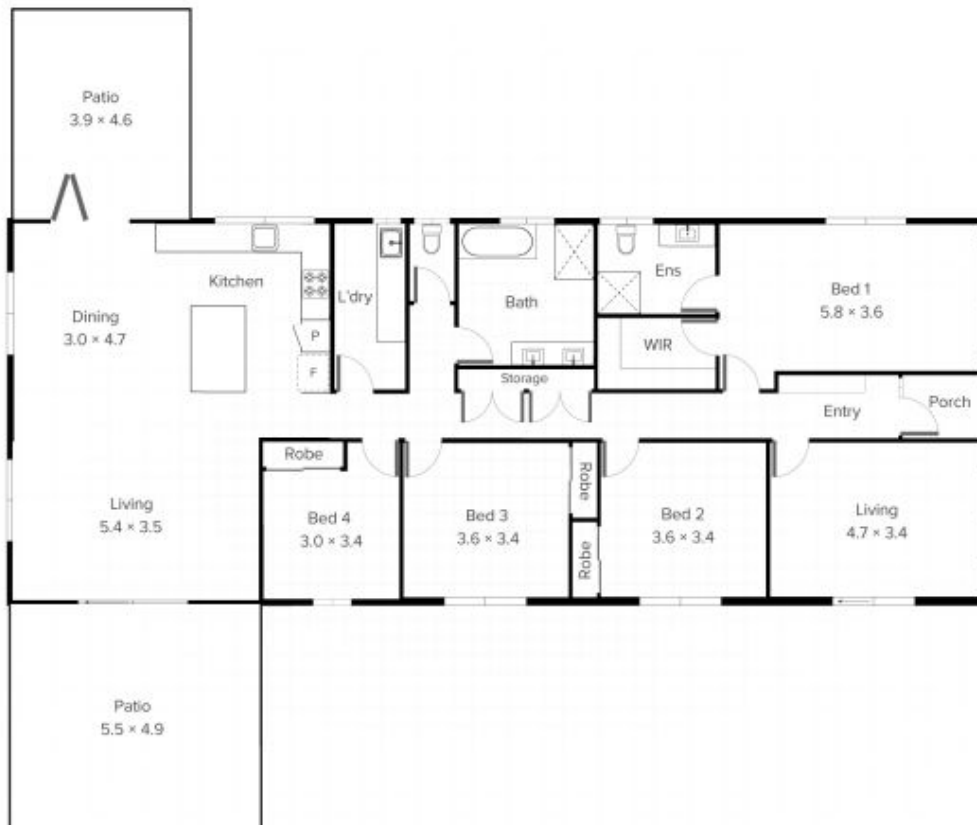
RE/MAX Property Specialits,  
Narrabeen



Internal  
**172m<sup>2</sup>**

External  
**48m<sup>2</sup>**

Total  
**220m<sup>2</sup>**



Floor Plan  
**Ground Floor**

Conditions of use: All floor plan measurements, positions and angles are approximate and for illustrative purposes only. Hausable makes no guarantee as to the accuracy of any measurements, symbols or features as the intent of this floor plan is to indicate the approximate layout of the property only, and must not be relied upon for any other purpose, whatsoever. While every attempt at accuracy is made, potential buyers must seek their own independent professional measurements to determine the homes suitability before purchase. Hausable accepts no responsibility or liability for any loss, however arising, from the use of this floorplan. This floor plan must not be reused, or resold for any reason without prior written consent from Hausable Pty Ltd.