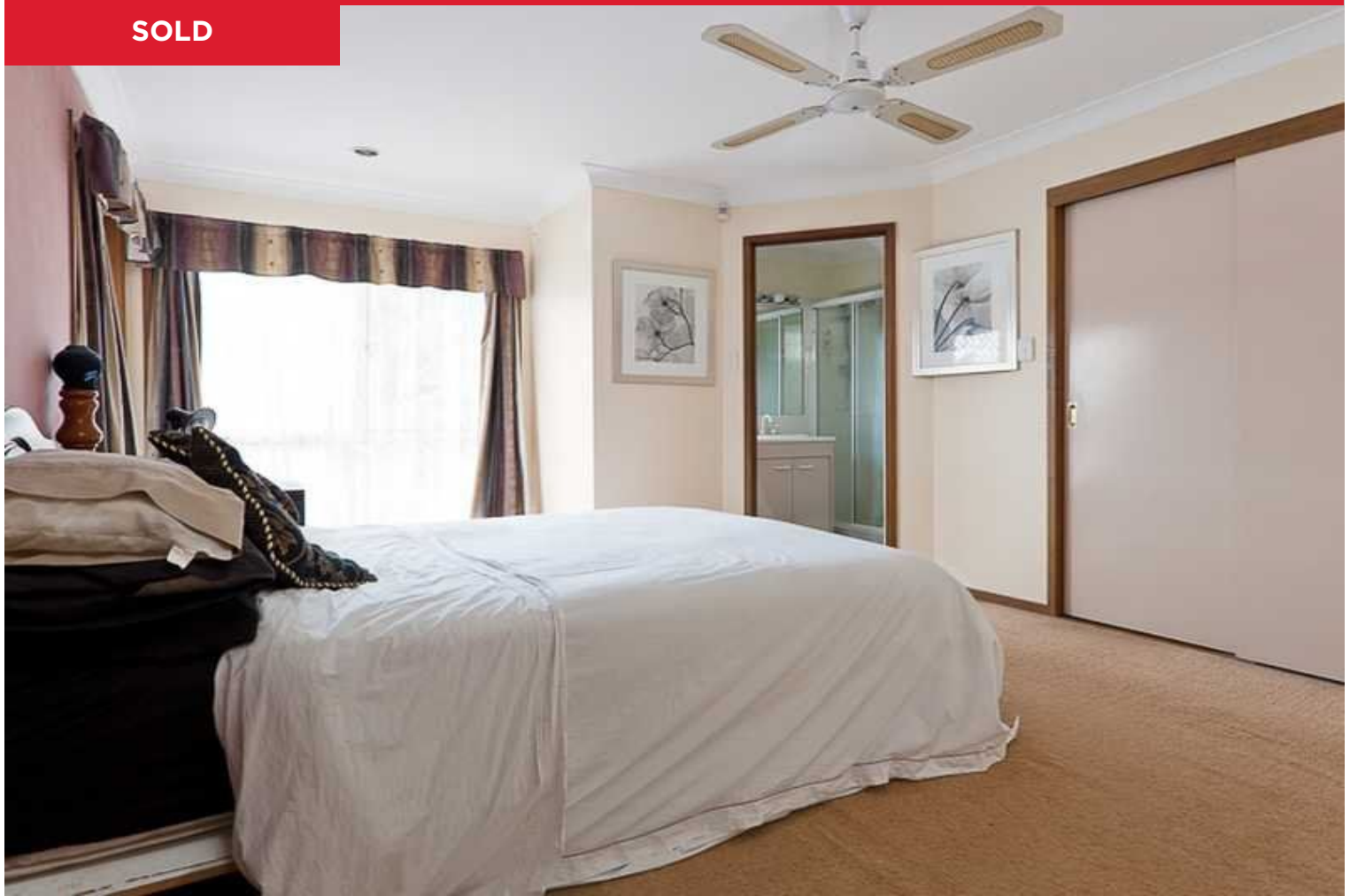


SOLD



348 Chatswood Road, Shailer Park

Enjoying a breezy, elevated position on a 1123m² block in a peaceful pocket of Shailer Park, this spacious family home is perfectly located for families. In short walking distance to Kimberley Park Primary School & two day care centres, the Hyperdome & John Paul College within a few minutes drive, public transport at your doorstep ... you cannot get a more convenient position!

The home itself offers a functional well devised layout with features that include:

- * Spacious and separated living and dining areas ensure that everyone in the family can enjoy their own personal space.
- * Four bedrooms in total. The master bedroom features an en suite & walk-in robe....

...

4  2  2 

Price: Undisclosed

View: <https://markcoleman.com.au/5548200>

Mark Coleman Team

M 0434169033

RE/MAX Property Specialits,
Narrabeen