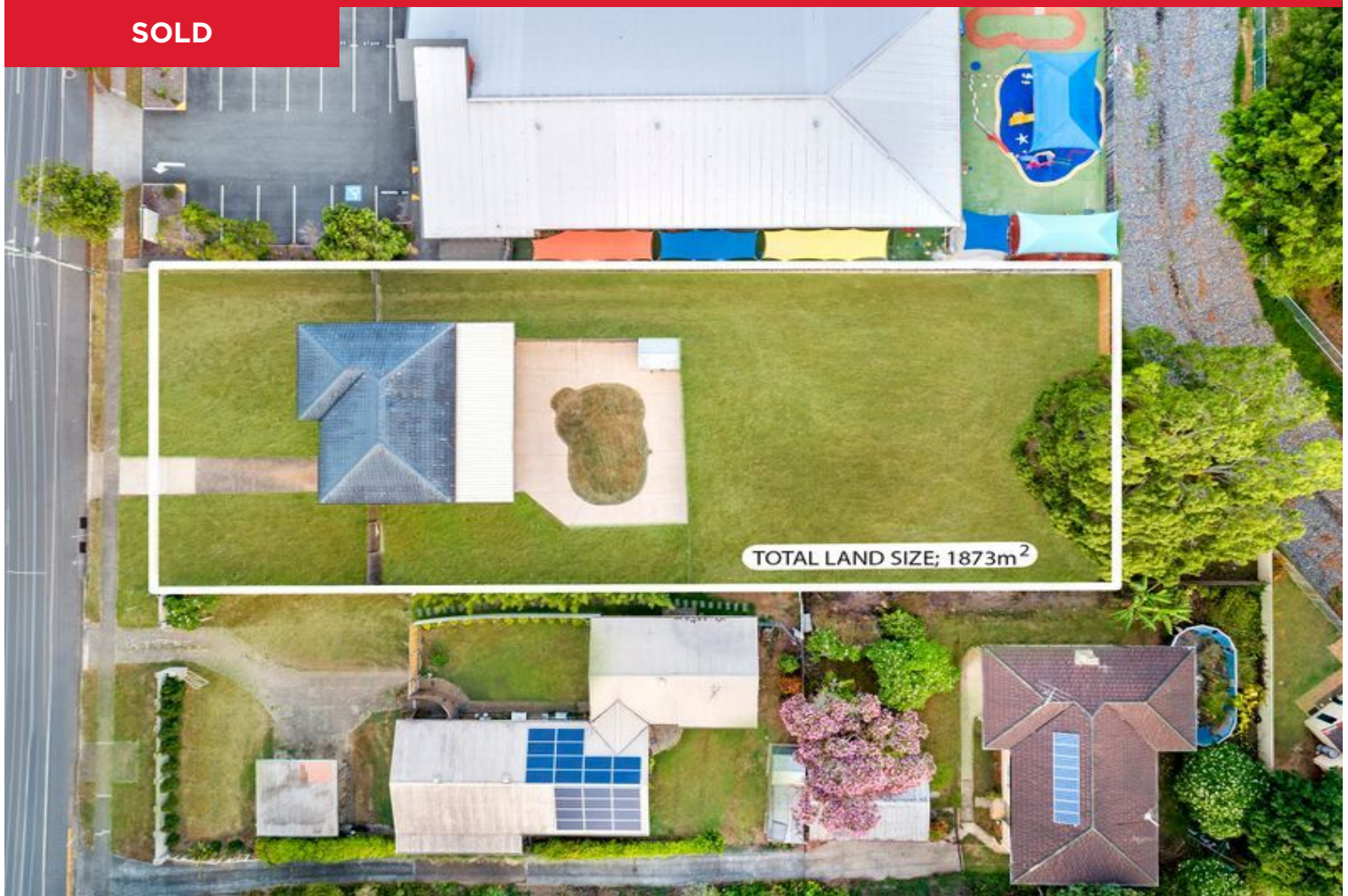


SOLD



151 Chatswood Road, Daisy Hill

Every so often opportunities arise that we intuitively know will not come again. For a discerning buyer who knows that location in real estate is everything, such an opportunity has arisen! Not only is this property directly opposite the prestigious John Paul College, the substantial block stands out for its development potential.

Set on a superb flat and useable 1873m2 block, the land has the potential to be sub-divided (with council approval) into 4 lots, each lot with a minimum of 350m2 up to 500m2.

Alternatively, the block has potential to develop into townhouses or duplexes. There is also possibility to develop the land with a commercial property, again subject to council approval....

The location of this property simply could not be better. You are directly opposite the prestigious John Paul College, St Edwards Primary School and have direct access to public transport. This section of Chatswood Rd is a hive of activity,

6 2

Price: Undisclosed

View: <https://markcoleman.com.au/5548863>

Mark Coleman Team
M 0434169033

RE/MAX Property Specialists,
Narrabeen