

**SOLD**

## 20 Merlin Court, Rochedale South

Enjoying a private position nestled against natural bushland reserve, this gorgeous character-filled home is ideal for entry level buyers or downsizers. At the peak of a peaceful cul-de-sac, the location is superb - you are privately tucked away yet in walking distance to every convenience you could wish for!

The home itself is in keeping with its natural bushland surroundings - from its bright green door to its use of timber and earthy colour palette. Certainly, no cookie cutter home - prepare to fall in love with its individuality, its leafy surrounds and absolute privacy! Soaring cathedral ceilings, dark floating timber flooring and crisp white walls lends the home a sense of openness whilst keeping the vibe down to earth & homely.

...

A spacious lounge room complete with reverse-cycle air-condit...

3  1  1 

**Price:** \$526,000

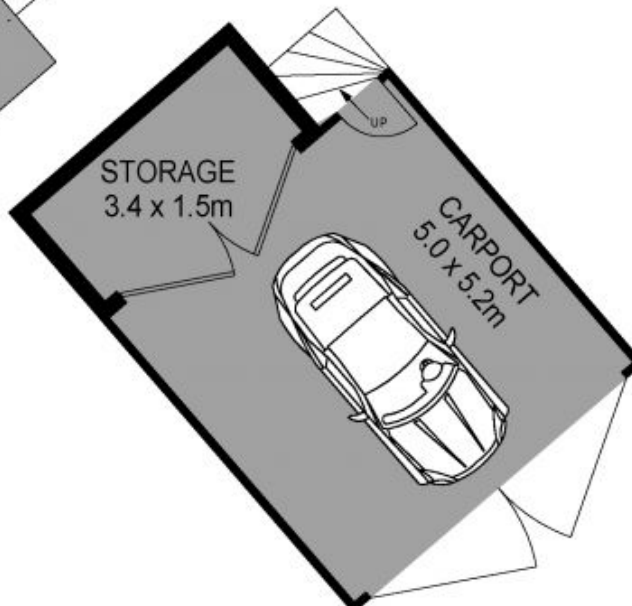
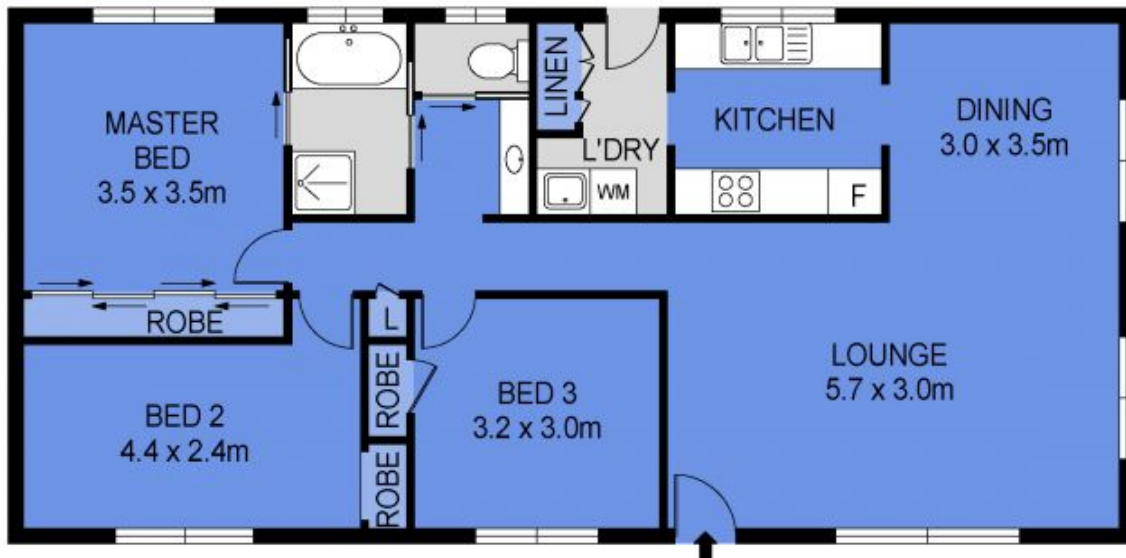
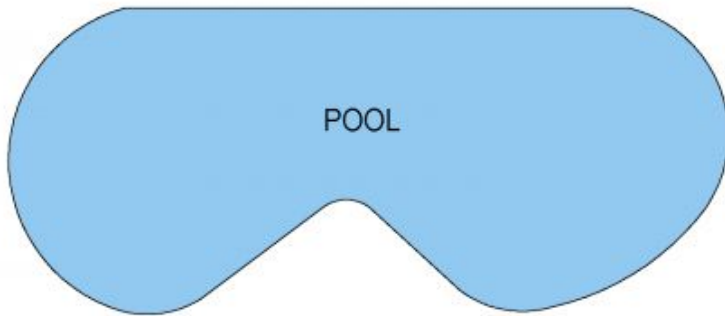
**View:** <https://markcoleman.com.au/6164470>

**Mark Coleman Team**

**M 0434169033**

**Nadine Nobile**  
**0412722900**

Narrabeen



Scale in metres. Indicative only. Dimensions are approximate. All information contained herein is gathered from sources we believe to be reliable. However we cannot guarantee its accuracy and interested persons should rely on their own enquiries

INT : 96m<sup>2</sup>  
EXT : 40m<sup>2</sup>

20 Merlin Court, Rochedale South