

**SOLD**

### 35 Green Trees Drive, Cornubia

Prepare to fall head over heels with this superb residence located in the coveted California Creek Estate. Presenting as new, the home is 'move in' ready, with absolutely nothing to do but simply enjoy the beautiful landscaping on its' fully fenced 660m2 allotment. Ultra- private and perfectly peaceful, the home enjoys a tranquil bushland backdrop.

Built by Coral Homes under 6 years ago, the home unfolds over one expansive level with an exceptional floorplan devised to suit the needs of the busy, modern family. A sublime atmosphere for entertaining and home life has been created by the open living spaces, clean lines and first-class fittings & finishes which typify this warm & welcoming home. High ceilings throughout add to the sense of spaciousness....

There are four generously sized bedrooms, all with built-ins and ceiling fans as well as a separate office/5th bedroom at the entry of the home. The serene master suite with its walk-in robe is cleverly positioned away from the hub of the home for absolute priv...

5  2  2 

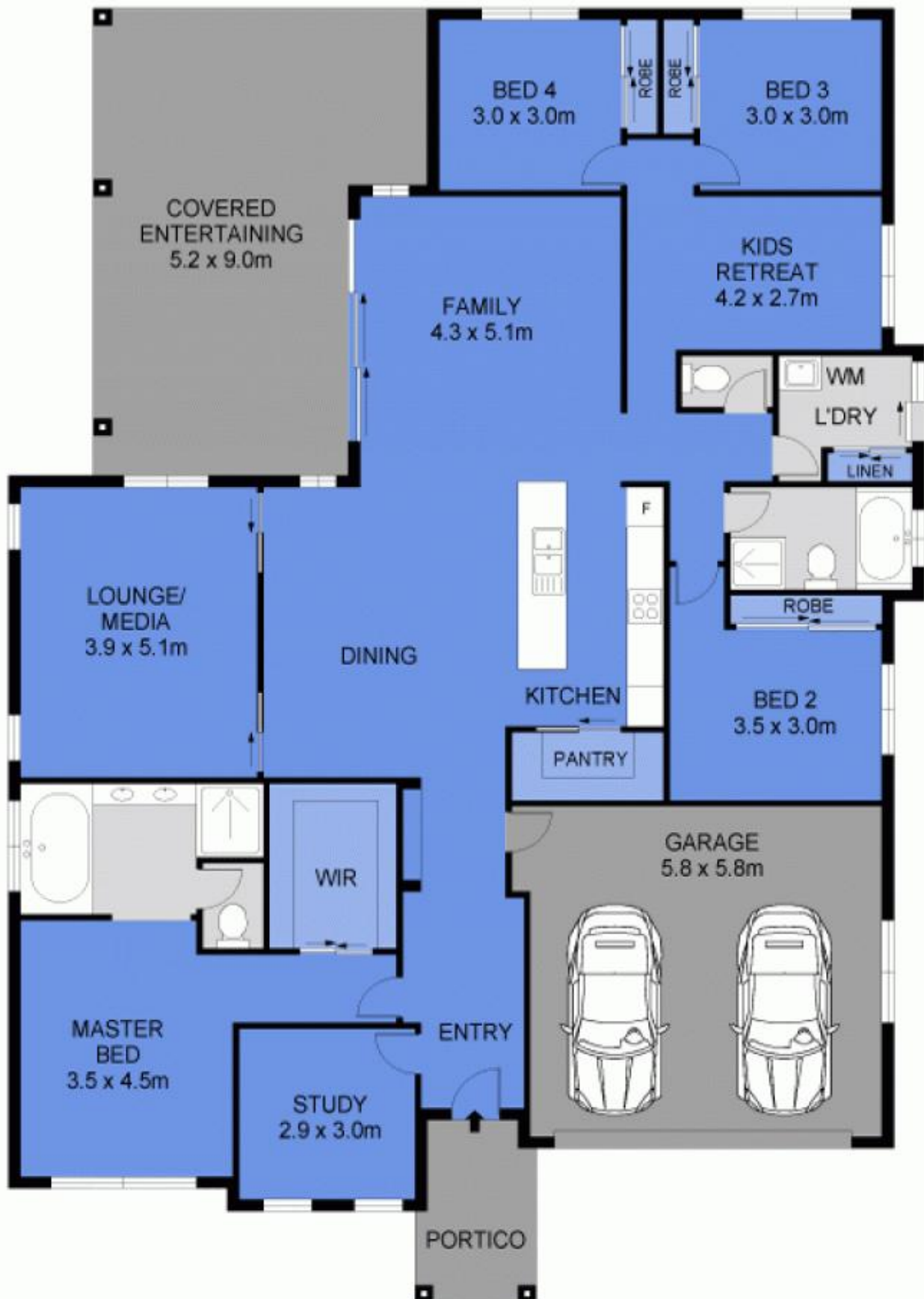
**Price:** \$800,000

**View:** <https://markcoleman.com.au/6199543>

**Nadine Nobile**  
**M 0412722900**

**Mark Coleman Team**  
**0434169033**

Narrabeen



Scale in metres. Indicative only. Dimensions are approximate. All information contained herein is gathered from sources we believe to be reliable. However we cannot guarantee its accuracy and interested persons should rely on their own enquiries.

INT : 213m<sup>2</sup>  
 EXT : 41m<sup>2</sup>  
 GARAGE : 37m<sup>2</sup>



35 Green Trees, Drive Cornubia