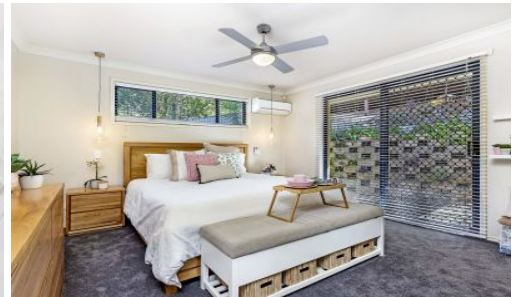


SOLD



43 Dane Court, Shailer Park

Situated in one of Shailer Park's premier streets, this stylish residence provides a tranquil escape to your own private paradise. Set against a sublime bushland backdrop on a 1000m2 allotment, peace & privacy reign supreme. With a smart streetscape, a step inside reveals a truly special home with a relaxed ambiance in perfect keeping with its natural bushland surrounds. High ceilings & modern square cut finishes ooze class. Plenty of natural light keeps the vibe upbeat, while a well-devised floorplan with split levels adds interest.

There are a total of four bedrooms, all with built-ins and ceiling fans and two with air-conditioning. The privately positioned master suite boasts a walk-in robe along with chic

...

4  2  2 

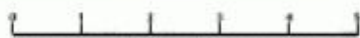
Price: \$683,000

View: <https://markcoleman.com.au/6302845>

Mark Coleman Team

M 0434169033

RE/MAX Property Specialits,
Narrabeen



Scale in metres indicative only. Dimensions are approximate. All information contained herein is gathered from sources we believe to be reliable. However we cannot guarantee its accuracy and interested persons should rely on their own enquiries.



INT : 146m²
 GARAGE : 37m²
 EXT : 92m²

43 Dane Court, Shailer Park