

SOLD



51 Mayda Street, Shailer Park

Welcome to 51 Mayda Street - your very own country haven in suburbia, guaranteed to soothe the soul with its tranquil farmland views. Imagine waking up to the sights and sounds of nature, with views across paddocks & ponds with ducks and horses meandering by. Even better, you can enjoy this outlook without the maintenance on your easy care, private 737m2 block (with side access).

This property not only stands out for its picturesque setting, but it provides two to four amazing options, ideal for large or extended families, or those wishing to produce a rental income from the property. The top and bottom level have separate meters.

...

Option 1: Perfect for large or extended families: enjoy the nine-bedroom, four-bat...

9  4  2 

Price: \$855,000

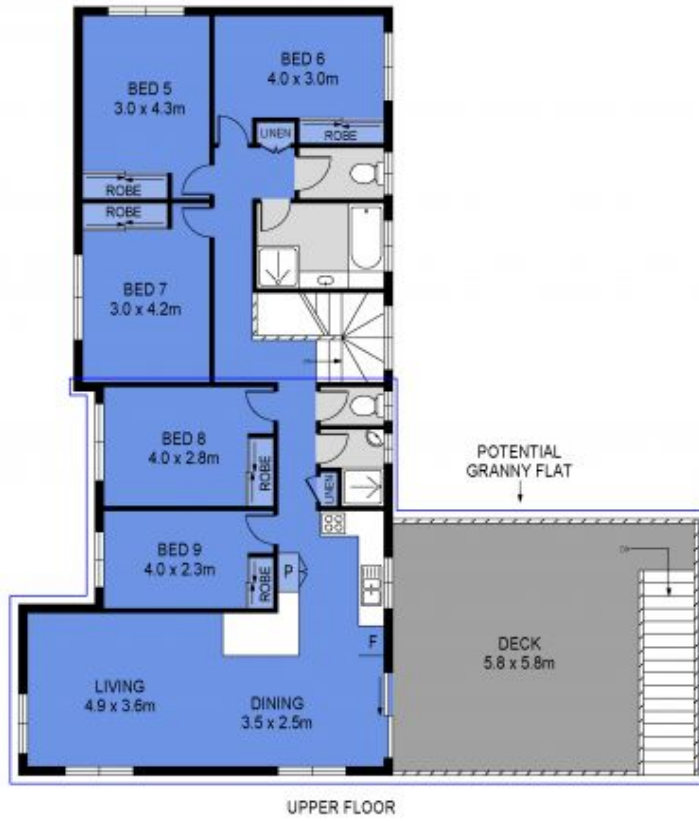
View: <https://markcoleman.com.au/6728352>

Nadine Nobile

M 0412722900

Mark Coleman Team
0434169033

Narrabeen



Scale in metres indicative only. Dimensions are approximate. All information contained herein is gathered from sources we believe to be reliable. However we cannot guarantee its accuracy and interested persons should rely on their own enquiries.

INT : 254m²
EXT : 41m²



51 Mayda Street, Shailer Park