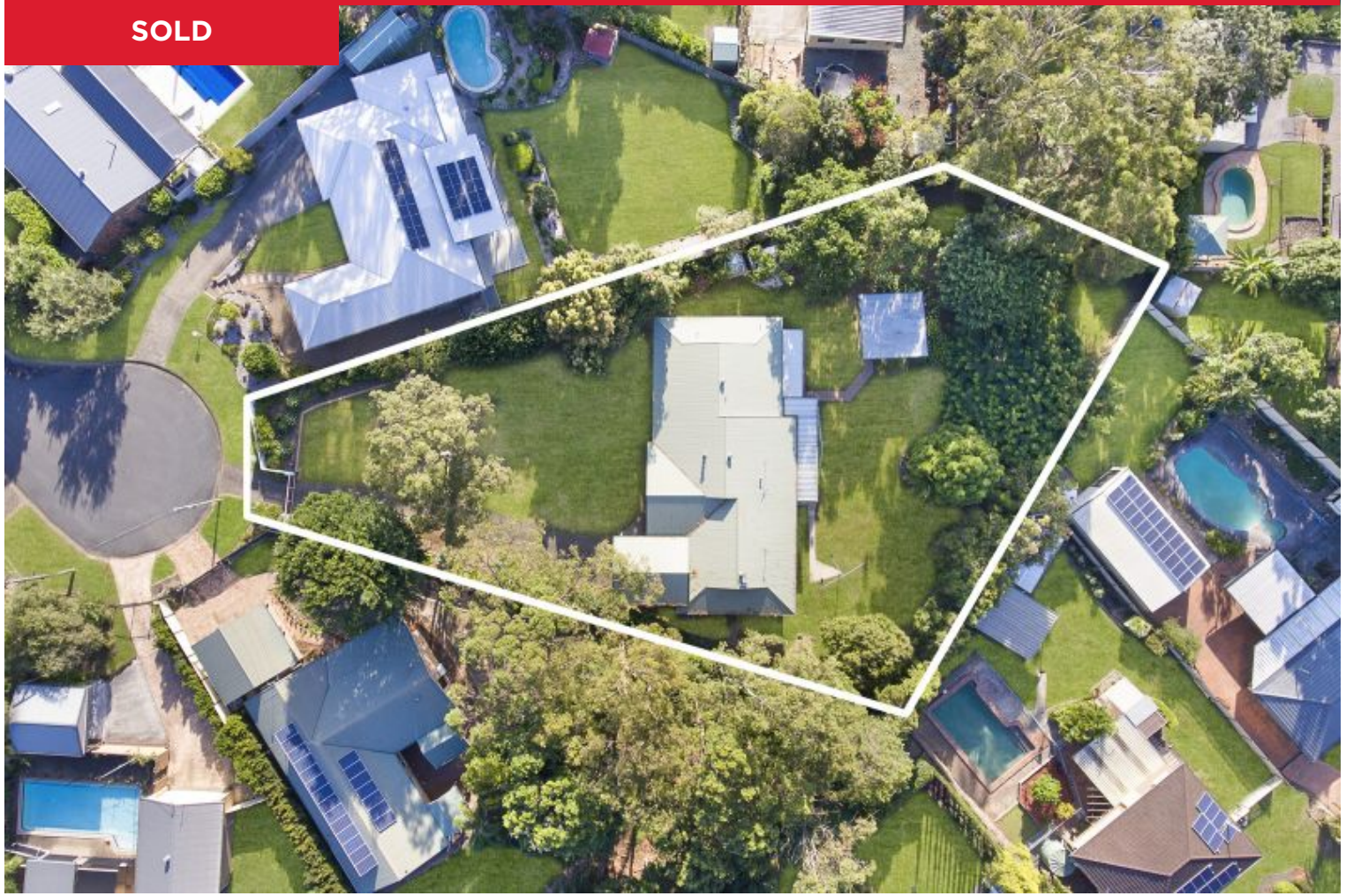


SOLD



10 Cooba Court, Shailer Park

Welcome to 10 Cooba Court Shailer Park, a taste of country living in the heart of suburbia!

Privately positioned at the peak of the court on a substantial 2458m² with vast front and rear yards, this property is truly exceptional. With a full, modern granny flat attached to the main home, the property is ideal for extended or large families.

Step through the secure electric gates and into your own private haven. The grounds are picturesque and there is room galore, so bring the chooks, pets, your boat, caravan and even the mother-in-law! The home itself is rich in character, with a farmhouse/colonial style in perfect keeping with its surroundings....

...

5  3  4 

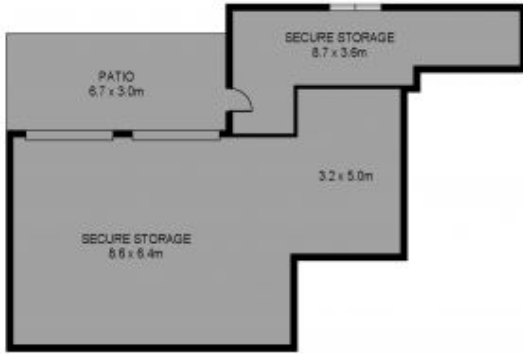
Price: \$960,000

View: <https://markcoleman.com.au/6924211>

Mark Coleman Team

M 0434169033

RE/MAX Property Specialits,
Narrabeen



LOWER LEVEL



UPPER LEVEL



Scale in metres. Indicative only. Dimensions are approximate. All information contained herein is gathered from sources we believe to be reliable. However we cannot guarantee its accuracy and interested persons should rely on their own enquiries.

INT : 224m²
EXT : 139m²
STORAGE: 95m²

10 Cooba Court, Shailer Park