

SOLD



## 28 Temma Street, Eagleby

Move right in or rent right out, as this impressive highset property has been updated with style. A breath of fresh air, the home has a cool white and grey colour palette and is light, bright, and breezy.

Situated in a peaceful pocket, the home sits on a level and fully useable 601m<sup>2</sup> block with excellent side access through to the rear yard.

The upper level is where you will do most of your living. A spacious carpeted lounge room features chic wall panelling finished in a smart grey tone. This area flows through to the dining and kitchen zone.

The modern & spacious kitchen features fresh white cabinetry that is smartly contrasted wi...

3  1  2 

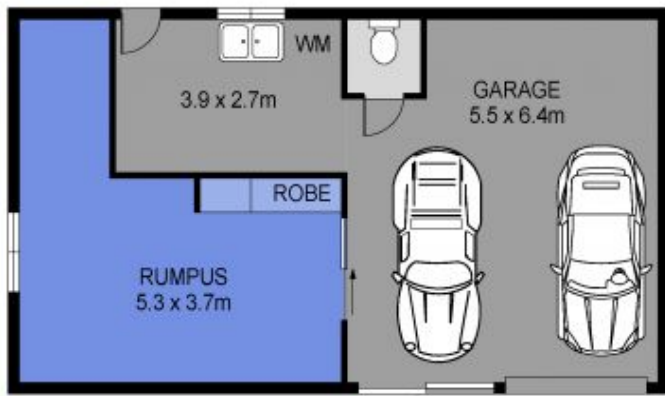
**Price:** \$501,000

**View:** <https://markcoleman.com.au/7269572>

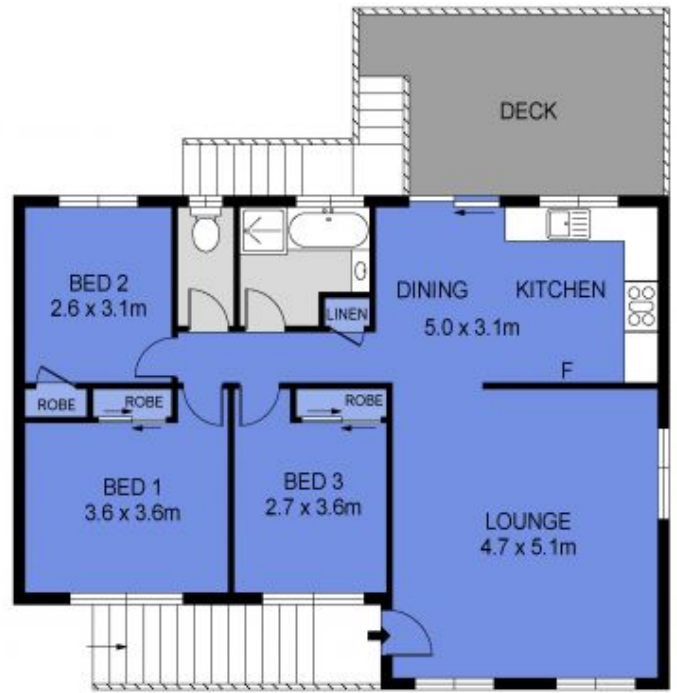
**Mark Coleman Team**

**M 0434169033**

RE/MAX Property Specialits,  
Narrabeen



GROUND LEVEL



UPPER LEVEL



Scale in metres indicative only. Dimensions are approximate. All information contained herein is gathered from sources we believe to be reliable. However we cannot guarantee its accuracy and interested persons should rely on their own enquiries

INT : 115m<sup>2</sup>  
 GARAGE : 48m<sup>2</sup>  
 EXT : 18m<sup>2</sup>

28 Temma Street, Eagleby