

**SOLD**

### 87-89 Boxer Avenue, Shailer Park

Situated in one of the finest streets in Shailer Park on a superb 879m2 block, this spacious lowset residence offers a wonderful lifestyle for your family. This home will surely tick all of your boxes with its well-devised, family friendly layout and its standout yard with a tranquil, inground pool nestled against a sublime bushland backdrop. Inside, multiple living zones provide an abundance of space and that much needed separation that families desire. A spacious lounge room flows through to a formal dining zone, and a combustion fireplace with a smart feature stone anchors the space perfectly. Fresh white shutters on the front window add a touch of class.

...

4  2 

**Price:** \$830,000

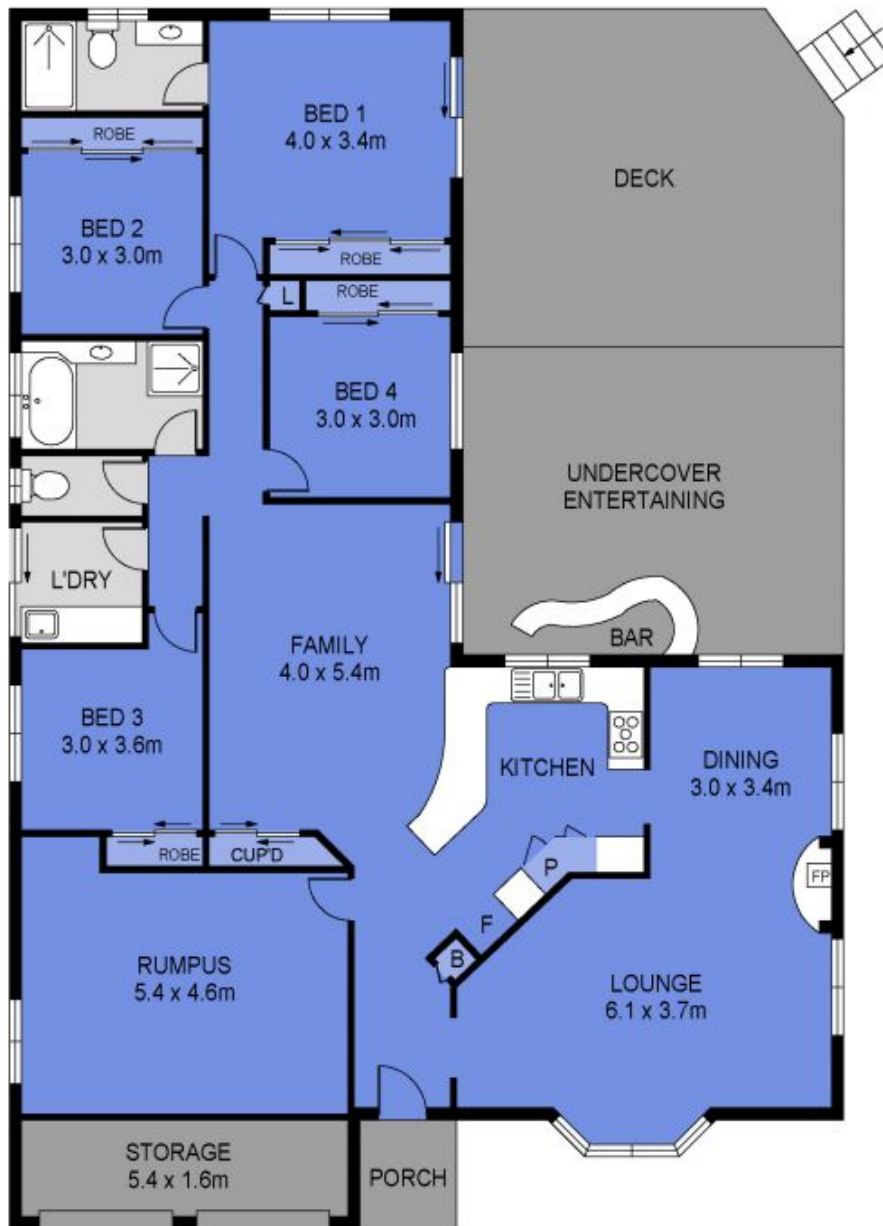
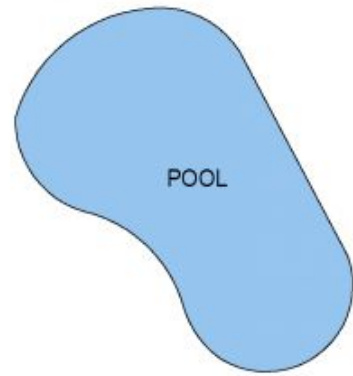
**View:** <https://markcoleman.com.au/7440374>

**Mark Coleman Team**

**M 0434169033**

RE/MAX Property Specialits,  
Narrabeen

GARDEN SHED  
2.2 x 2.8m



Scale in metres. Indicative only. Dimensions are approximate. All information contained herein is gathered from sources we believe to be reliable. However we cannot guarantee its accuracy and interested persons should rely on their own enquiries

INT : 178m<sup>2</sup>  
 EXT : 76m<sup>2</sup>  
 STORAGE : 9m<sup>2</sup>



87 Boxer Avenue, Shailer Park