

**SOLD**

## 2/4 Harley Street, Shailer Park

OPEN HOME THU 6/4 9-9.30AM

With a smart streetscape, this modern family home would suit families looking for a low maintenance lifestyle without compromising on space and design. Positioned in a secure estate of only 15 homes, the home is in short walking distance to vibrant Pioneer Park which is literally a children's (& parents) paradise with its playgrounds, BBQ areas and tennis courts.

Investors Note : The affordability, convenient position and easy care nature of this home would make it a great rental property. There is currently a tenant in place with the lease expiring in May. A rental estimate is available on request....

...

4 2 2

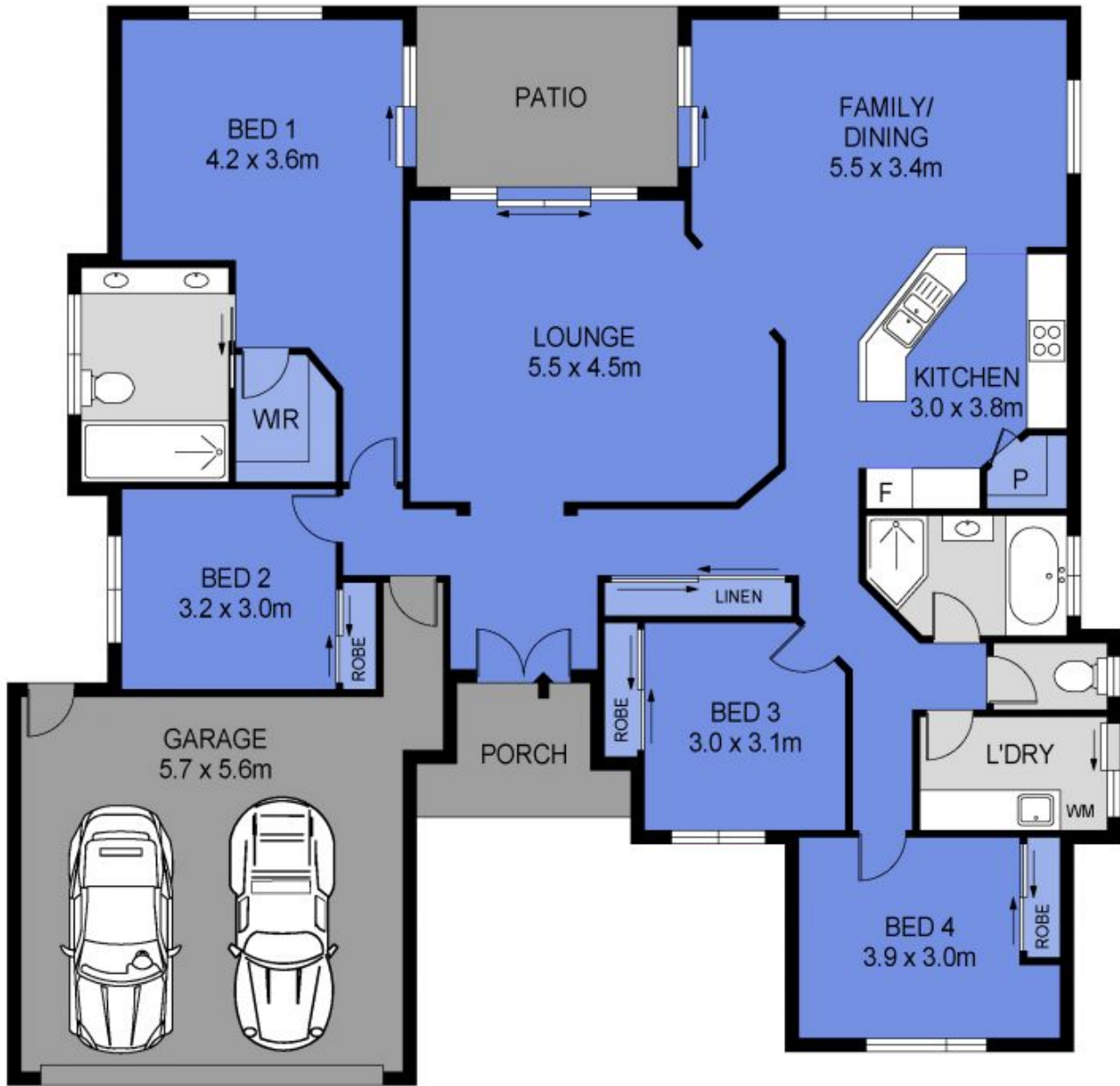
**Price:** \$735,000

**View:** <https://markcoleman.com.au/7472679>

**Mark Coleman Team**

**M 0434169033**

RE/MAX Property Specialits,  
Narrabeen



Scale in metres. Indicative only. Dimensions are approximate. All information contained herein is gathered from sources we believe to be reliable. However we cannot guarantee its accuracy and interested persons should rely on their own enquiries

INT : 162m<sup>2</sup>  
 GARAGE : 35m<sup>2</sup>  
 EXT : 16m<sup>2</sup>



2/4 Harley Street, Shailer Park