

SOLD



47 Camballin Court, Shailer Park

Enjoying a premier position at the peak of the court on a sublime 1326m² block, this sprawling lowset residence offers a first-class lifestyle for your family. Built in 2008, this modern home is one of the newest in the area and is immaculate in presentation, with beautifully landscaped native gardens that are a true delight to explore. Never to be built out, the "stop-you-in-your-tracks" forest backdrop makes for a truly peaceful and idyllic lifestyle for the whole family.

Enjoy the special privilege of being able to walk from your private back yard directly to bushwalking and biking tracks that lead you right through to the Daisy Hill Forest. This rare position truly is paradise found for bushwalkers, mountain bikers and nature lovers alike! ...

Inside, the immaculately presented home will surprise you with its size and spaciousness. A functional, well-devised floorplan caters to the largest of families with ease. All rooms in the home have large glass windows, allowing you to soak in

4  2  2 

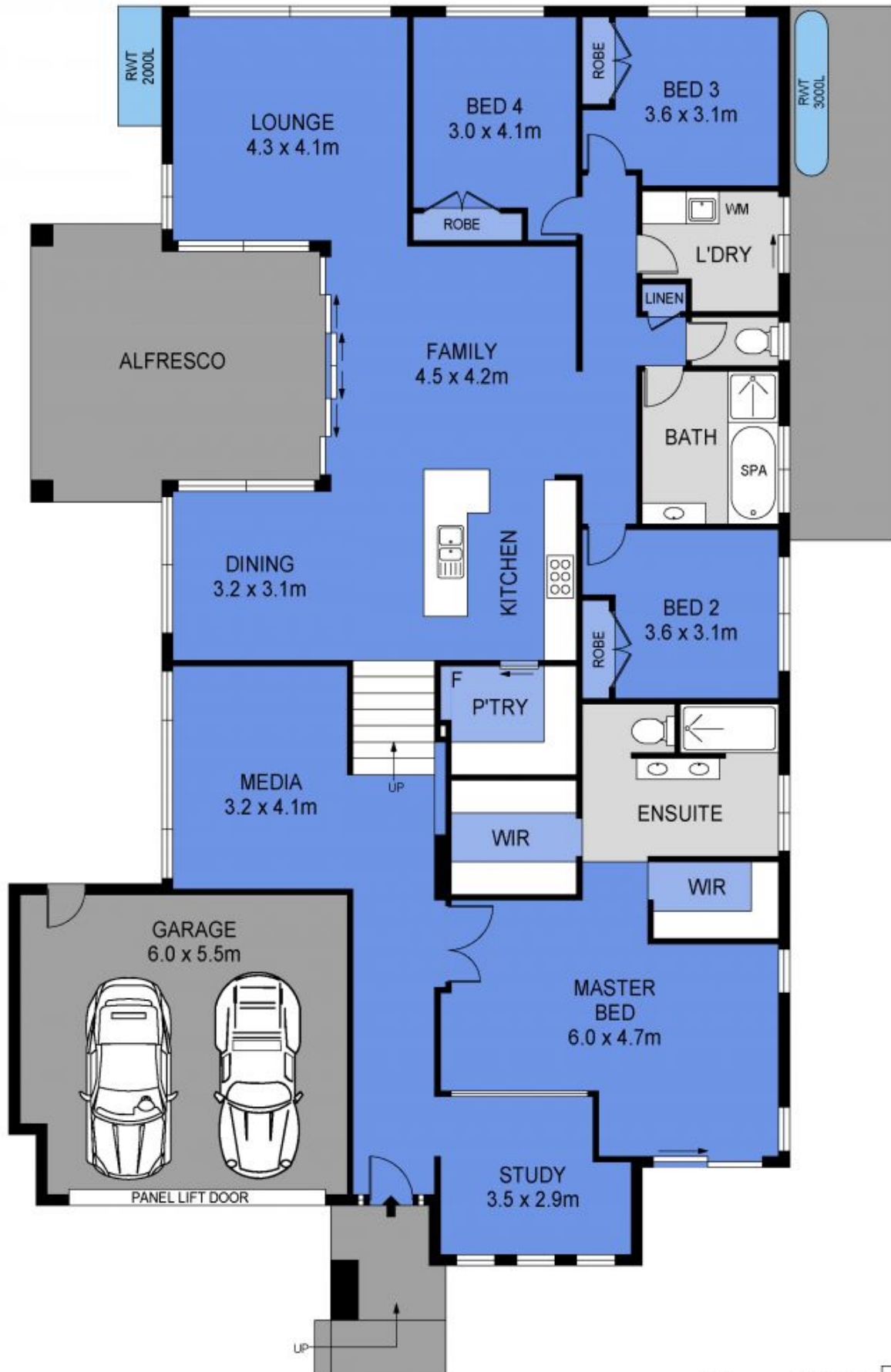
Price: \$1,220,000

View: <https://markcoleman.com.au/7736929>

Mark Coleman Team

M 0434169033

RE/MAX Property Specialits,
Narrabeen



Scale in metres. Indicative only. Dimensions are approximate. All information contained herein is gathered from sources we believe to be reliable. However we cannot guarantee its accuracy and interested persons should rely on their own enquiries

INT : 223m²
 GARAGE : 36m²
 EXT : 32m²



47 Camballin Court, Shailer Park