

SOLD



51 Dane Court, Shailer Park

Positioned in one of Shailer Park's finest pockets, 51 Dane Court is a stunning expression of modern design. Built in 2012, the home is one of the newest in this leafy bushland pocket where you are surrounded by other quality homes. The striking front facade is a sign of things to come, a step inside revealing a creative and inspiring design that unfolds over multiple split levels. Architectural angles, square-cut edges, cut-out wall panels and soaring ceilings add to the sense of sophistication and wide-open space. Two separate living areas unfold over the second split level. A rich timber feature wall to one side adds to the luxe look and feel.

...

4 2 2

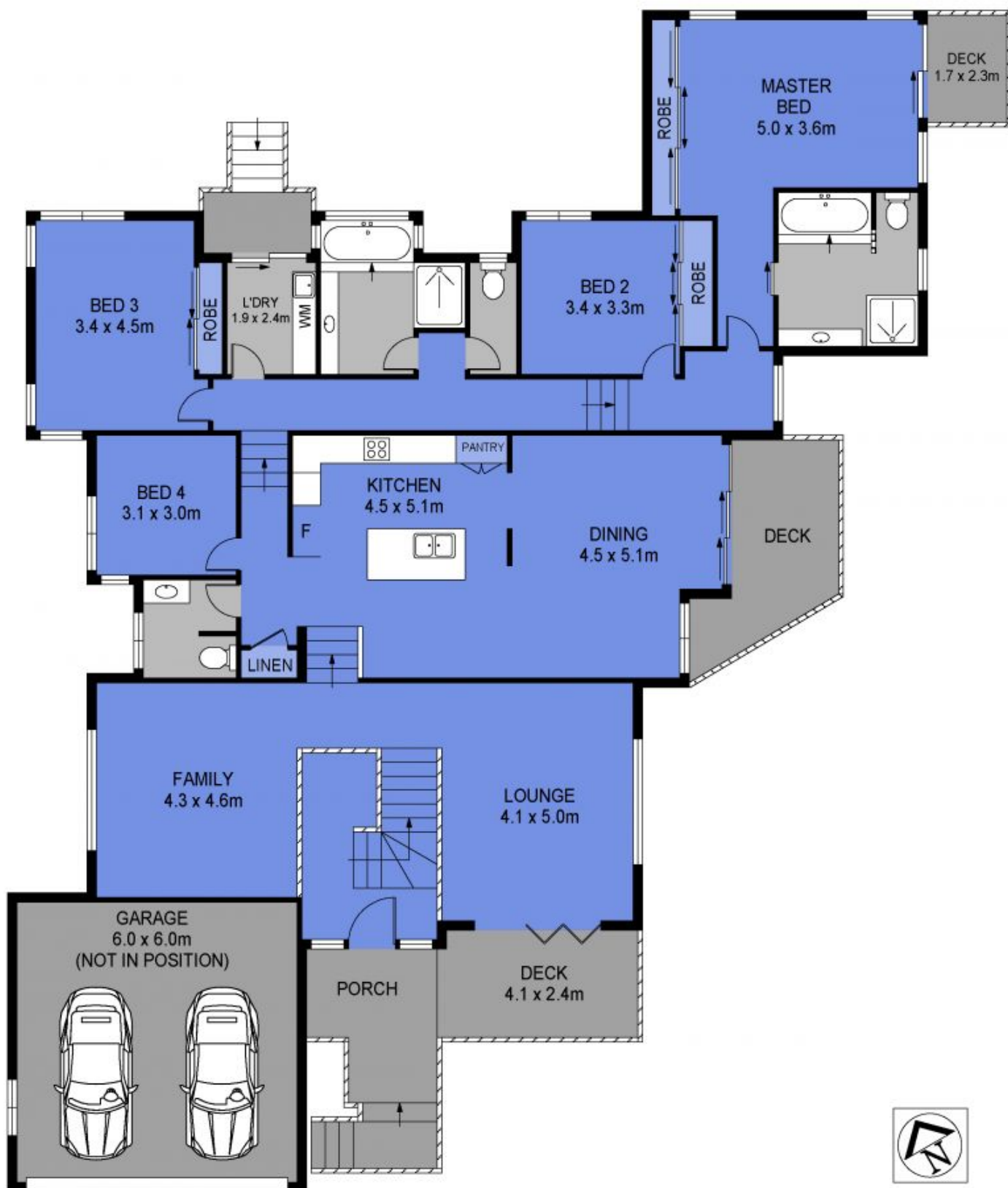
Price: \$1,140,000

View: <https://markcoleman.com.au/7745867>

Mark Coleman Team

M 0434169033

RE/MAX Property Specialists,
Narrabeen



Scale in metres. Indicative only. Dimensions are approximate. All information contained herein is gathered from sources we believe to be reliable. However we cannot guarantee its accuracy and interested persons should rely on their own enquiries

INT : 224m²
 EXT : 39m²
 GARAGE : 36m²

51 Dane Court, Shailer Park