

SOLD



22-24 Heeler Court, Shailer Park

Situated in one of Shailer Park's finest courts, this captivating residence unfolds over two glorious levels with a floorplan ideal for the largest of families. Rich in character and beautifully maintained throughout, this much-loved, long-term family home is set to capture your heart. Rich Tasmanian Oak timber floorboards, stained glass features, soaring 9ft ceilings and grand dimensions add to the charm and sense of wide open-space. This is such a special place to call home, and somewhere friends and family will love to gather and enjoy life's special moments.

The lower level of the home is adaptable for dual-living or ideal for those who run a home-based business. On this level you will find:...

...

5  3  2 

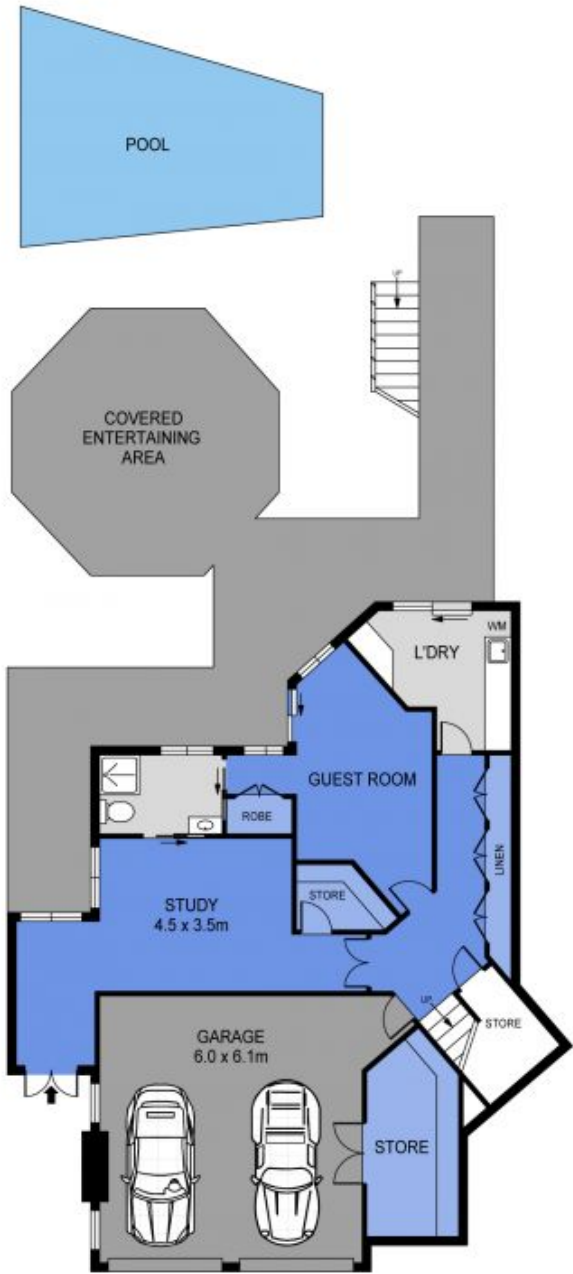
Price: \$1,230,500

View: <https://markcoleman.com.au/7826767>

Mark Coleman Team

M 0434169033

RE/MAX Property Specialits,
Narrabeen



GROUND LEVEL



UPPER LEVEL



Scale in metres Indicative only. Dimensions are approximate. All information contained herein is gathered from sources we believe to be reliable. However we cannot guarantee its accuracy and interested persons should rely on their own enquiries

INT : 337m²
 GARAGE : 38m²
 EXT : 198m²

22 Heeler Court, Shailer Park