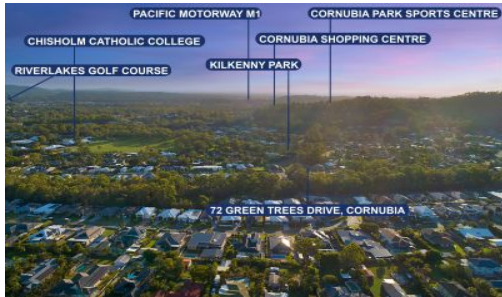


SOLD



72 Green Trees Drive, Cornubia

Welcome to where living is easy! This captivating lowset residence will appeal to those searching to downsize their workload and enhance their lifestyle, without compromising on position, quality or design & presents as NEW! Created for fuss-free living and absolute lifestyle enjoyment, the home is located in a whisper quiet position towards the end of a picturesque cul-de-sac. Situated in the coveted California Creek Estate, where you are surrounded by other well maintained modern, executive homes, with neatly manicured lawns and gardens, properties rarely come up for sale in this prized pocket and it is no surprise why!

Built in 2015, by local builder Shane Dalby, the home is set to inspire and delight with i...

3  2  2 

Price: \$1,200,000

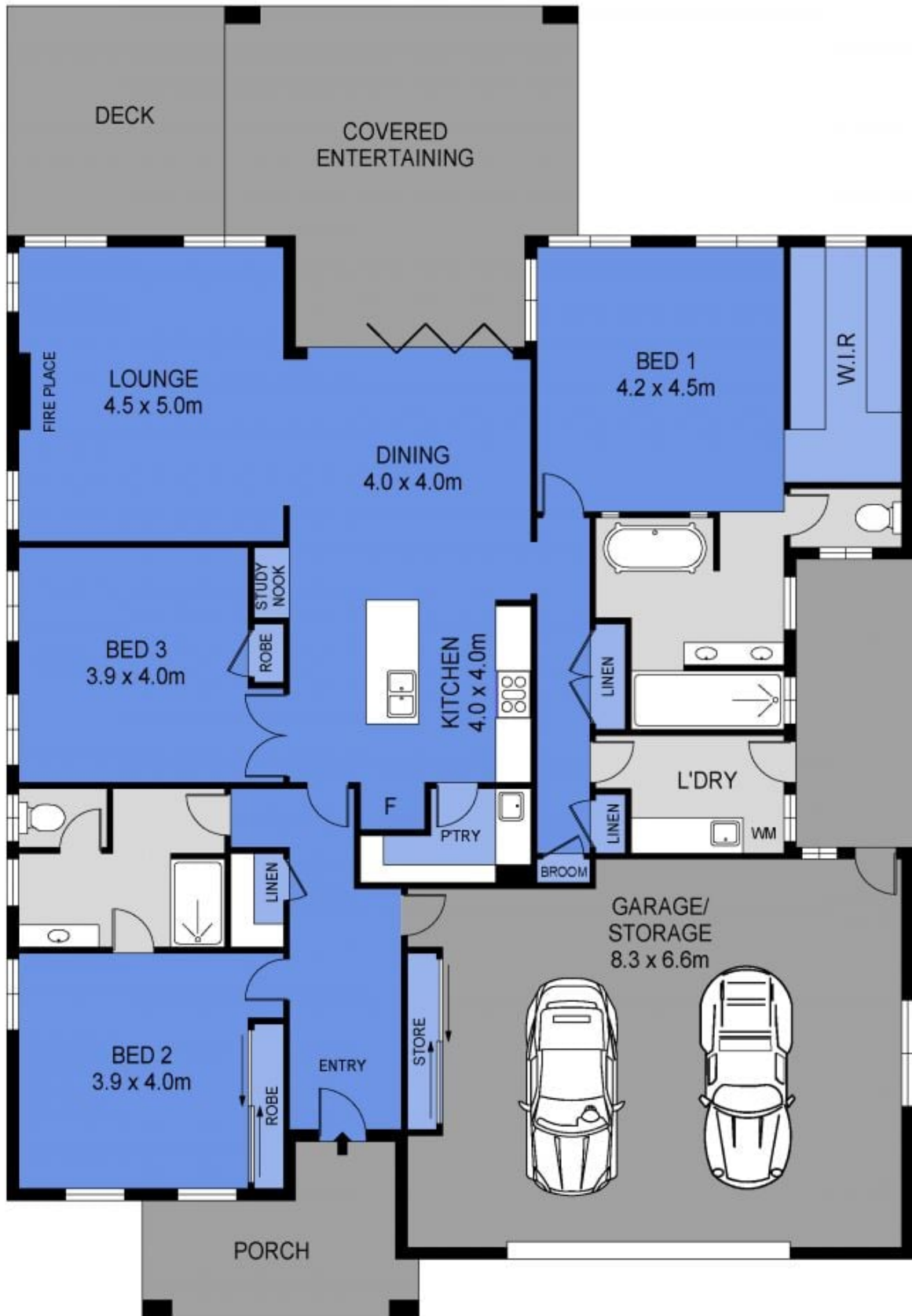
View: <https://markcoleman.com.au/7902966>

Nadine Nobile

M 0412722900

Mark Coleman Team
0434169033

Narrabeen



Scale in metres. Indicative only. Dimensions are approximate. All information contained herein is gathered from sources we believe to be reliable. However we cannot guarantee its accuracy and interested persons should rely on their own enquiries

INT : 180m²
 GARAGE : 55m²
 EXT : 67m²



72 Green Trees Drive, Cornubia