

SOLD

9 Tangadee Court, Shailer Park

Set on a superb 1126m² block in the prestigious Koolan Precinct, this immaculate residence offers an exceptional lifestyle for your family. Nestled against a picturesque leafy backdrop, the home is located in a very quiet cul-de-sac in walking distance to Kimberley Park Primary School. The block offers side access on both sides and a fabulous useable rear yard which is hard to find in this sought after pocket. Multiple living areas ensure that everyone in the family can enjoy their own personal space. A large lounge room leads out to its own private balcony. Open-plan casual living and dining zones connect seamlessly through sliding doors to the outdoor entertaining area, a perfect set-up for both family life and entertaining. A cosy combustion fireplace anchors the main living zone and will keep you warm in the cooler months....

There are a total of four bedrooms, all with built-ins. The master bedroom is positioned for privacy and enjoys its own

4  2  2 

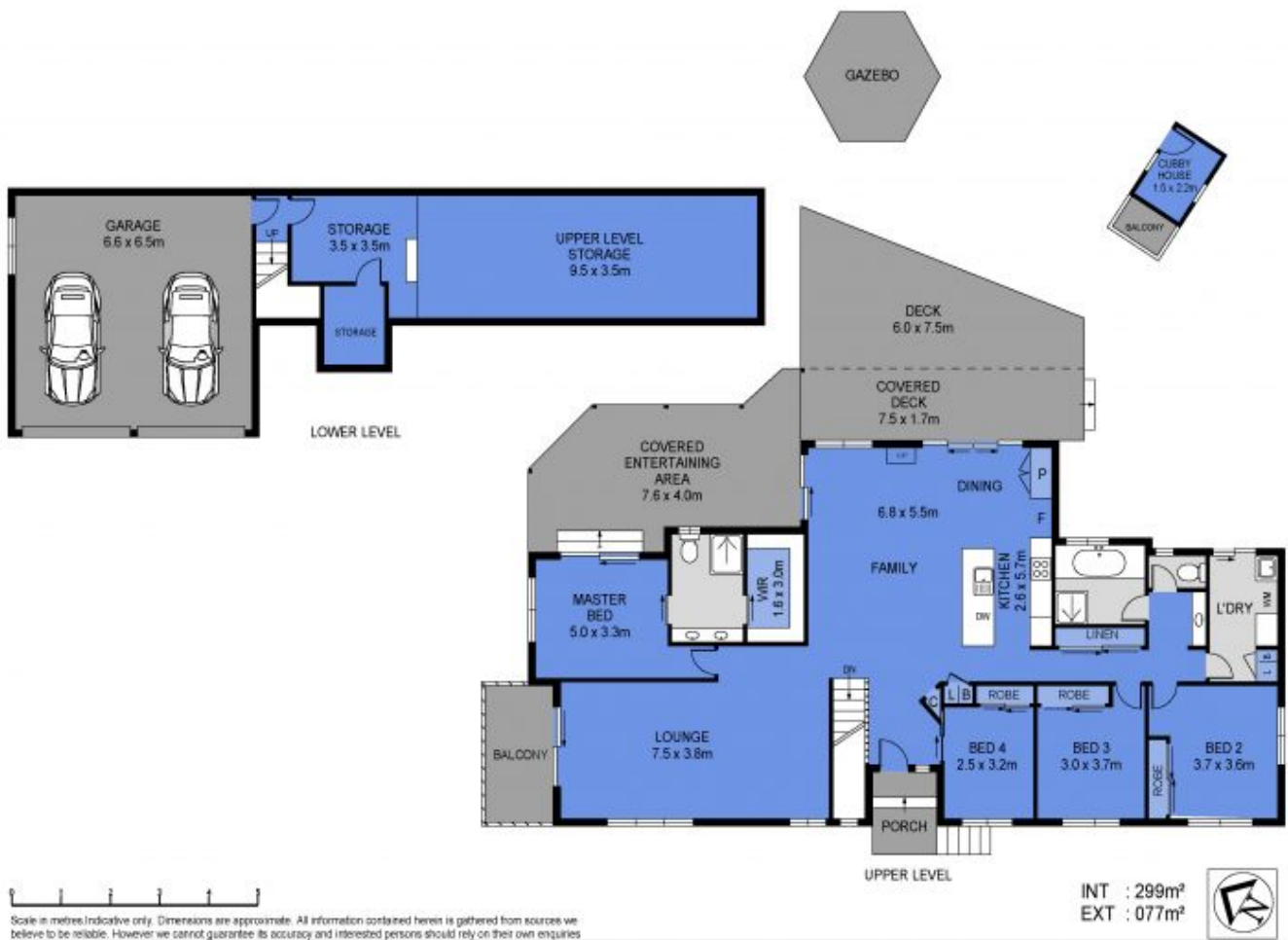
Price: \$1,025,000

View: <https://markcoleman.com.au/7916866>

Mark Coleman Team

M 0434169033

RE/MAX Property Specialits,
Narrabeen



9 Tangadee Court, Shailer Park