

SOLD

1/392 Chatswood Road, Shailer Park

Setting a new benchmark for sophisticated, easy-care living, this stylish townhome is an ultra-rare find, with its pet and child-friendly yard set on a private corner block with a natural bushland backdrop. Offering the perfect affordable solution to entering the hot Shailer Park property market, this fully renovated residence is positioned in an intimate community of just five townhomes, and has the feel and yard space of a small house.

Positioned on the corner of Chatswood Rd and with access to Koolan Park and a very quick walk across the street to the area's most sought-after state school, Kimberley Primary - we recommend you run to view this gem!...

...

3  1  1 

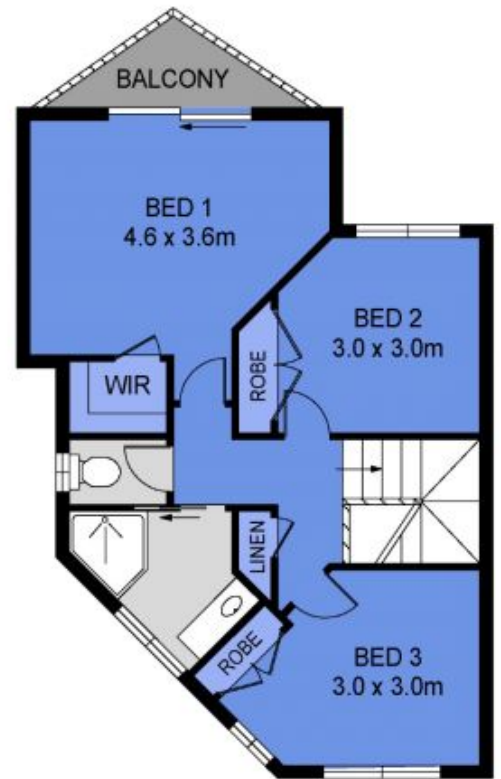
Price: \$655,000

View: <https://markcoleman.com.au/7960374>

Mark Coleman Team

M 0434169033

RE/MAX Property Specialits,
Narrabeen



FIRST FLOOR



Scale in metres. Indicative only. Dimensions are approximate. All information contained herein is gathered from sources we believe to be reliable. However we cannot guarantee its accuracy and interested persons should rely on their own enquiries



INT : 107m²
 GARAGE : 23m²
 EXT : 173m²

1/392 Chatswood Road, Shailer Park