



## 36 Roselea Street SHAILER PARK QLD

3 2 4

Set on a standout 1012m<sup>2</sup> block in walking distance to the Logan Hyperdome & with public transport at your doorstep, this immaculate home is presented with style. With a well-devised floorplan and expansive outdoor spaces, it strikes the perfect balance between comfort and functionality for both everyday living and entertaining.

Upon entry, you'll find a light-filled and open-plan casual living and dining area. There is plenty of space in this zone to also set up a children's playspace, dining or study area. Freshly painted white walls, luxe white shutters and light-toned floorboards add to the modern look and feel.

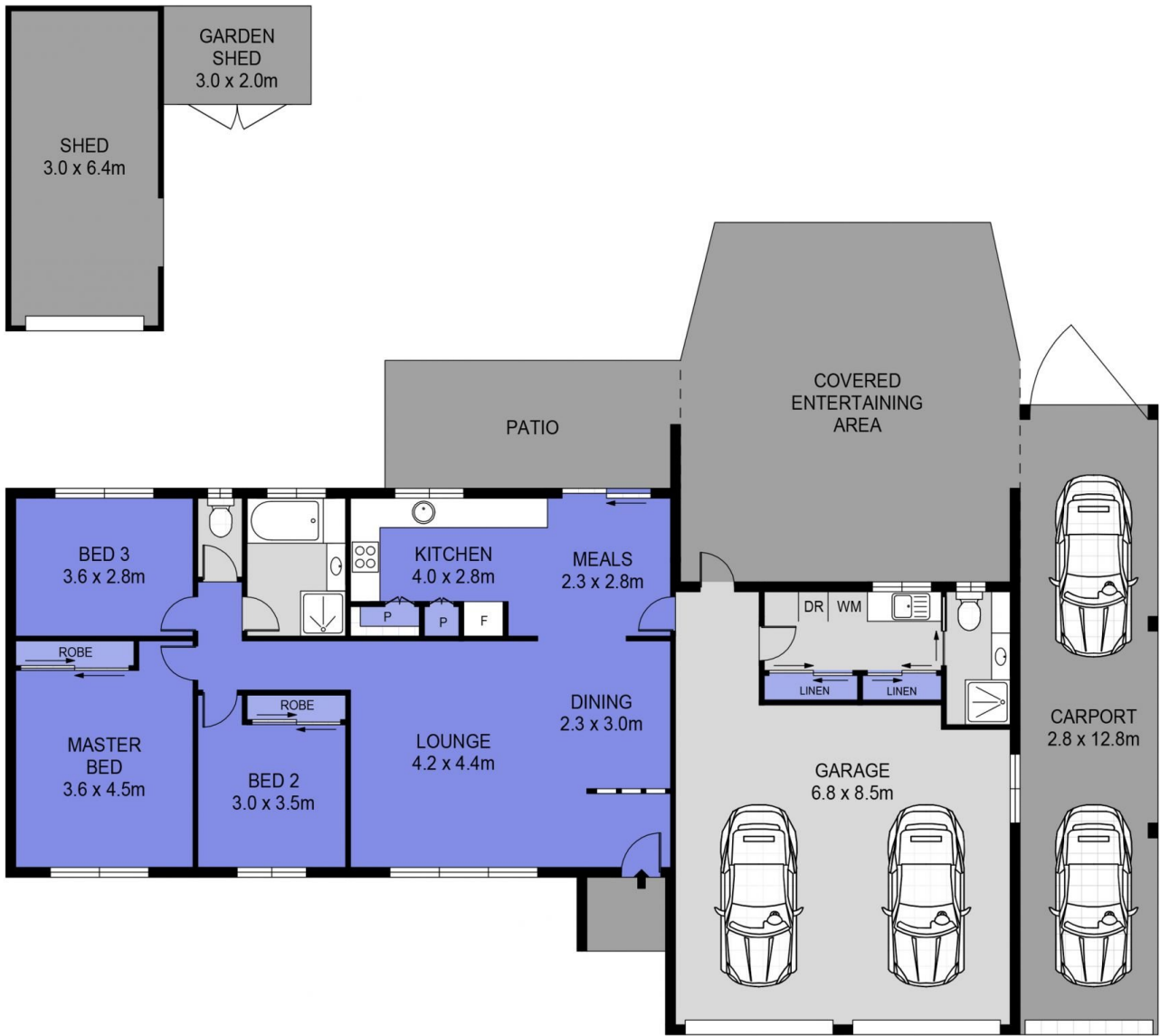
The open-plan spaces flow effortlessly into the large, chef-inspired kitchen. White stone benchtops are

**Type** : House  
**Price** : \$ 910,000  
**Land Size** : 1012 sqm  
**View** : <https://www.markcoleman.com.au/8226996>



**Mark Coleman Team**  
**0434169033**

[For full version visit the website](https://www.markcoleman.com.au)



Scale in metres. Indicative only. Dimensions are approximate. All information contained herein is gathered from sources we believe to be reliable. However we cannot guarantee its accuracy and interested persons should rely on their own enquiries

INT : 107m<sup>2</sup>  
 GARAGE : 61m<sup>2</sup>  
 EXT : 126m<sup>2</sup>



36 Roselea Street, Shailer Park